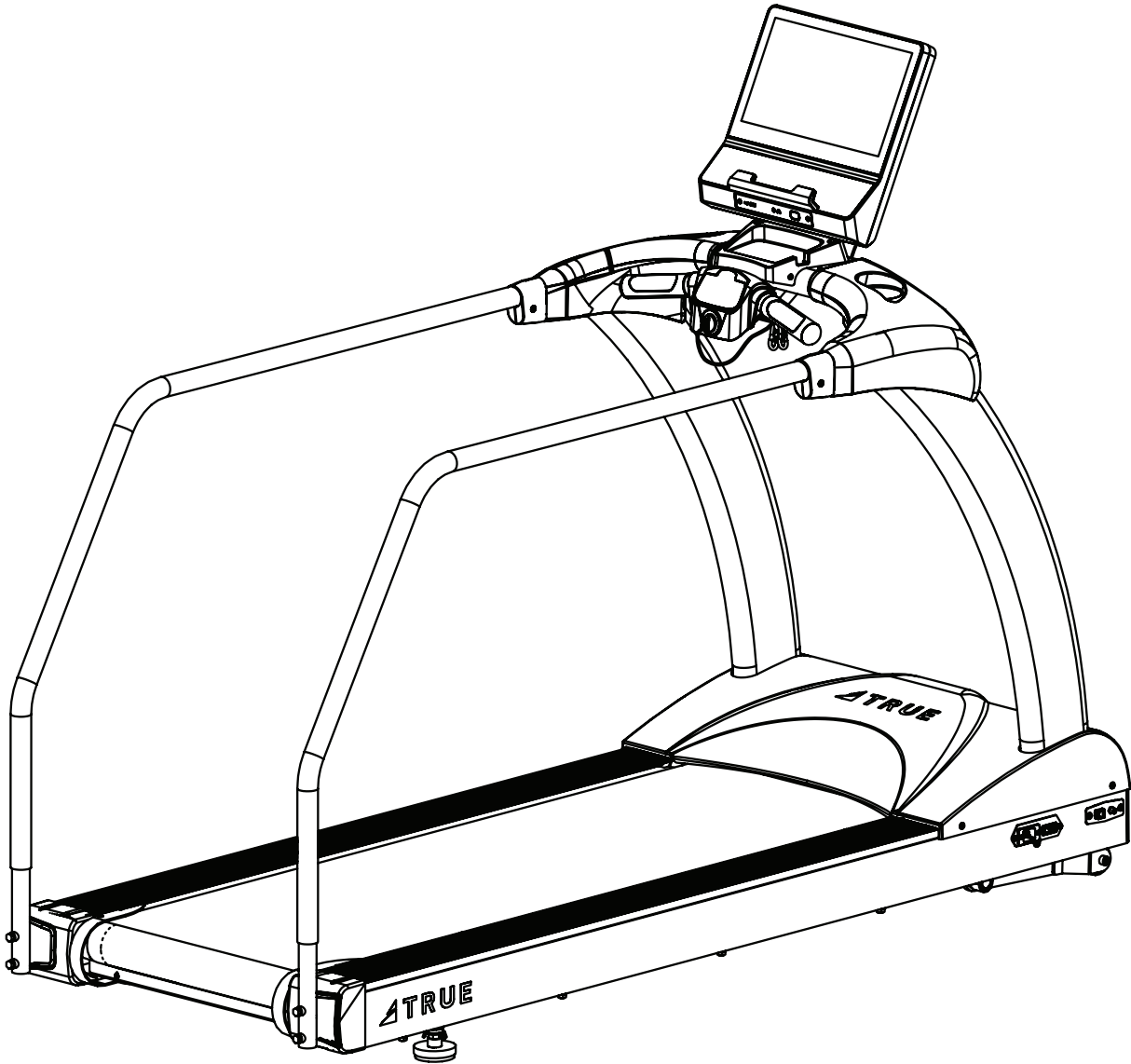


TCS200/TC400/TC600 REHAB RAIL KIT

 **TRUE[®]**

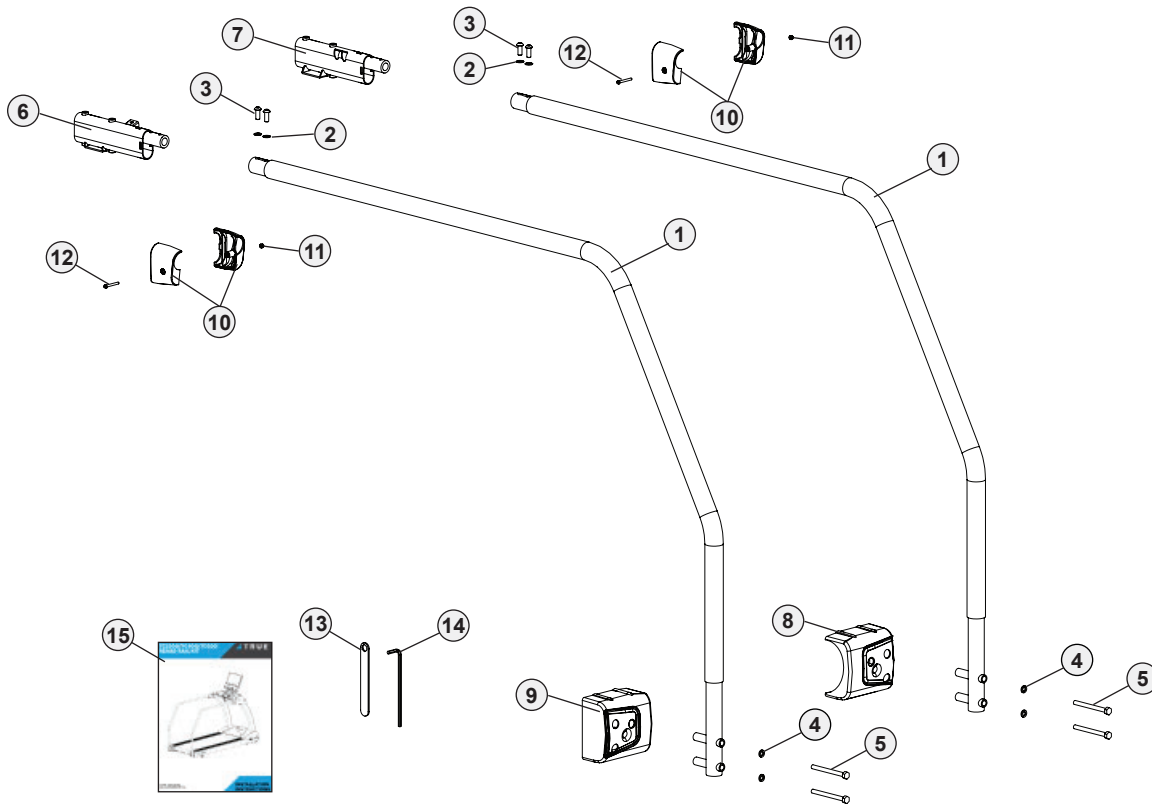


MODEL 00601100BK
MAN-00601100BK REV00

**INSTALLATION
INSTRUCTIONS**

KIT CONTENTS

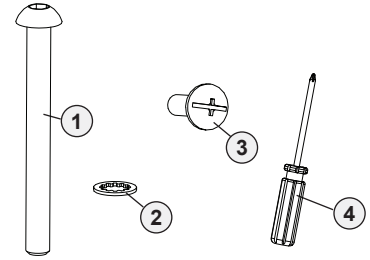
ITEM	PART NUMBER	DESCRIPTION	QTY
1	00601101BK	SUBASSEMBLY, LONG HANDGRIP	2
2	RT0011	WASHER, STAR, INTERNAL TOOTH, M8	4
3	PS0712	ALLEN BOLT SCREW, M8-1.25 X 20MM	4
4	PS0099	WASHER, SPRING M8	4
5	RT0012	HHS, M8-1.25 X 90MM, BLK, ZP	4
6	0060110001BK	HANDRAIL BASE-LEFT	1
7	0060110002BK	HANDRAIL BASE-RIGHT	1
8	00601103BK	REAR END CAP-RIGHT	1
9	00601102BK	REAR END CAP-LEFT	1
10	00601104BK	SUBASSEMBLY, REHAB RAIL COVER CLAMSHELL	2
11	RT0017	NUT, LOCK, NYLON, M4 X P0.7	2
12	RT0013	ROUND HEAD PHILIPS SCREW, M4-0.7 X 35MM	2
13	SK-426	WRENCH, 13MM	1
14	SSA5-35-160MS	HEX WRENCH 5MM X 35MM X 160MM	1
15	MAN-00601100BK	TCS200/TC400/TC600 REHAB RAIL KIT INSTALLATION INSTRUCTIONS	1



ADDITIONAL ITEMS NEEDED—NOT INCLUDED WITH KIT

ITEM	PART NUMBER	DESCRIPTION	QTY
1	TCS4028	BHCS, M8X1.25X80MM	4
2	RT0011	WASHER, STAR, INTERNAL TOOTH, M8	4
3	PS0035	SCREW M5xP0.8x15MM	2
4	N/A	#2 PHILLIPS SCREWDRIVER	1

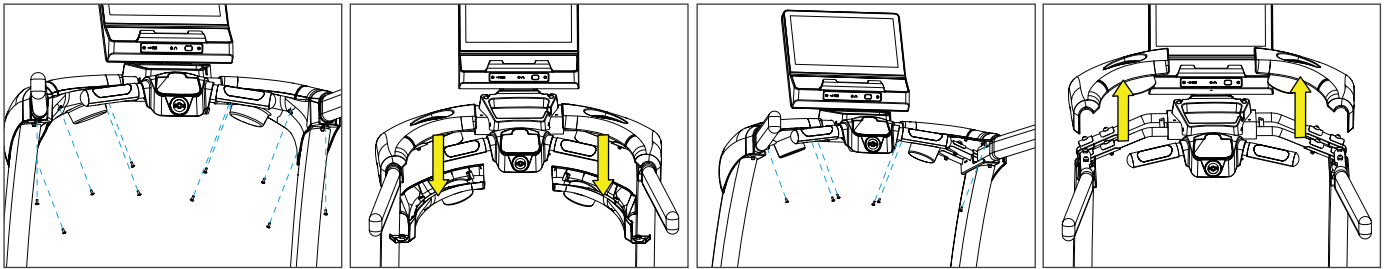
NOTE: The additional hardware needed is included with the TCS200/TC400/TC600 treadmill.



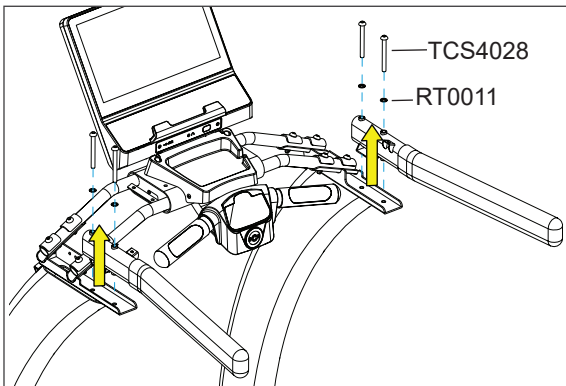
NOTE: Supplemental video available on vimeo.com: <https://vimeo.com/821057734>.

STEPS

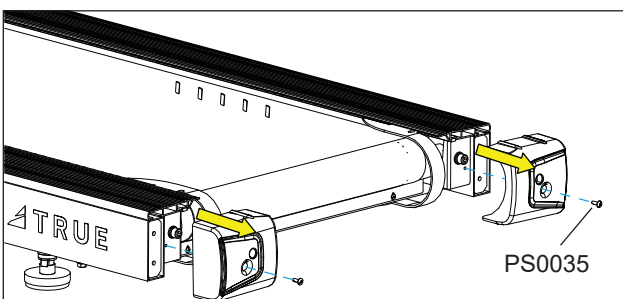
1. If this kit is part of a new installation, skip ahead to step 2. If this kit is going on a pre-assembled treadmill that has the shoulder covers and handrails already assembled, continue on with this step:
 - a. Using a #2 Phillips screwdriver, remove and set aside the 16 screws securing the left and right, top and bottom shoulder covers to the console rack.



- b. Using a 5mm allen wrench, remove and set aside the four screws and washers securing the left and right handrails to the pedestals.

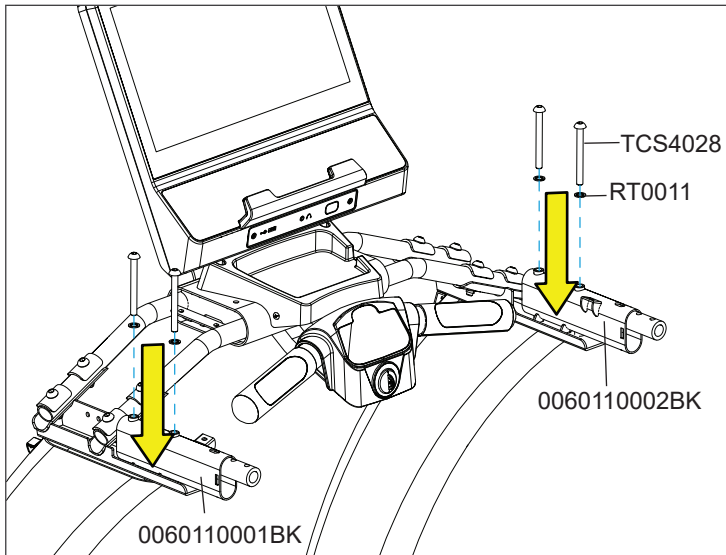


2. Using a #2 Phillips screwdriver, remove and set aside the two screws securing the left and right rear roller covers to the frame.

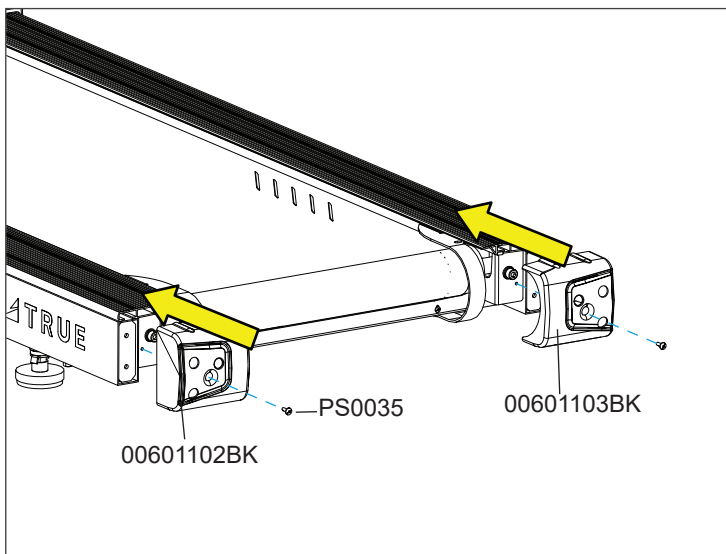


STEPS CONTINUED

3. Using the existing handrail screws and washers, finger tighten the left and right rehab rail kit handrails to the pedestals. Once the screws are finger tight, use a 5mm allen wrench to fully tighten all four screws.

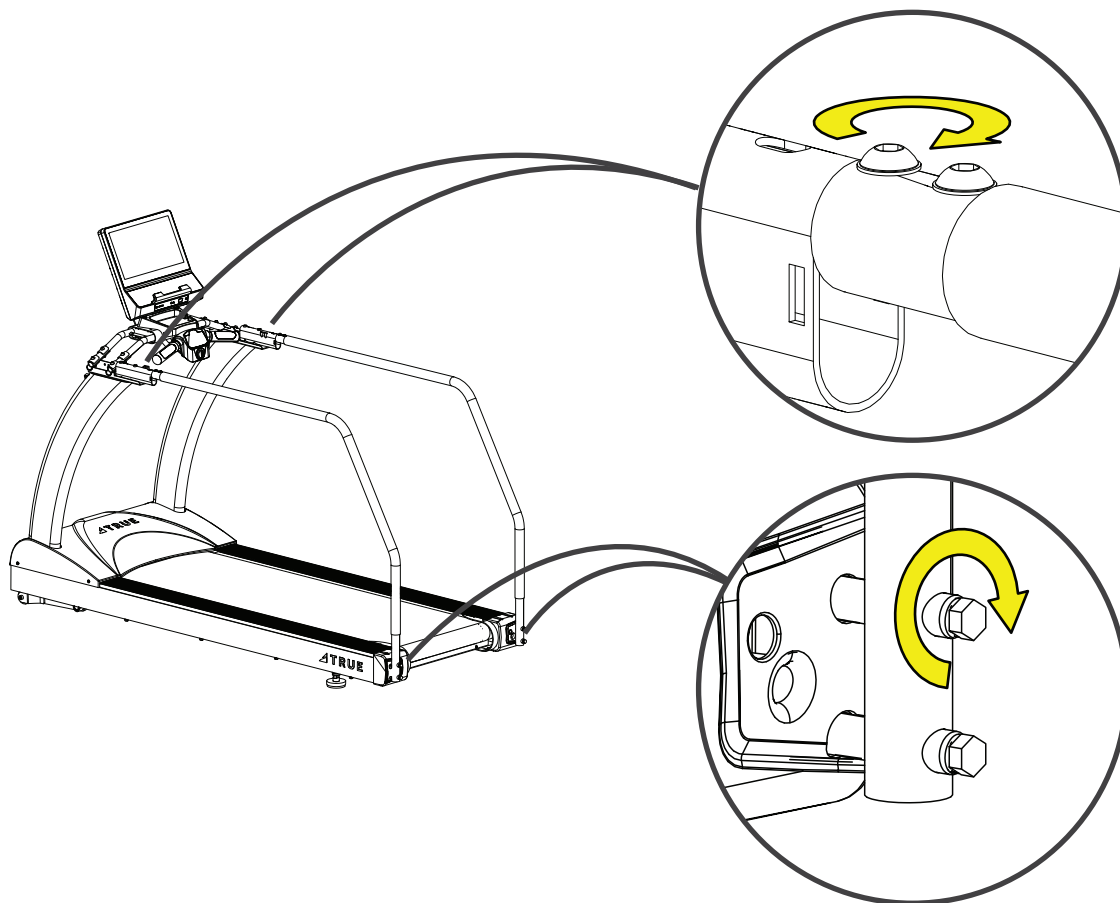
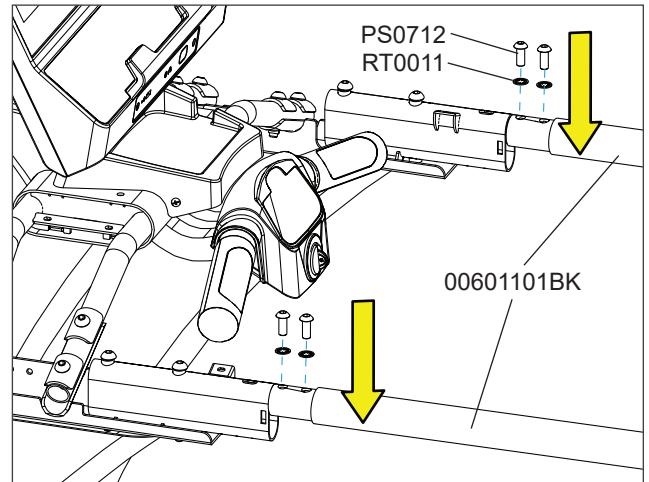
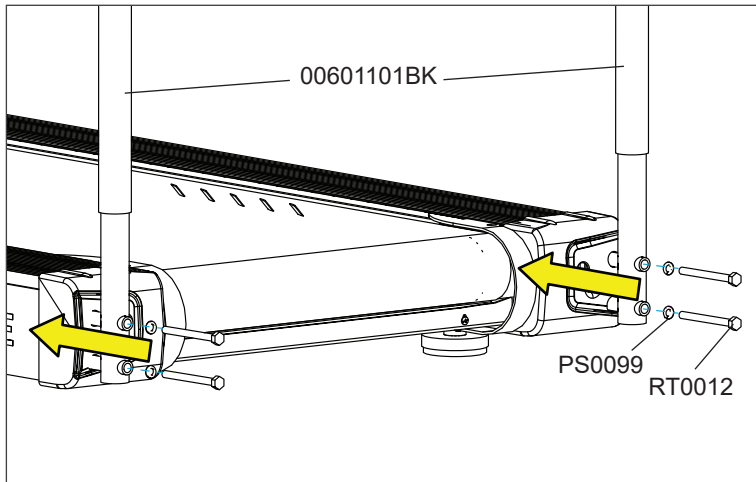


4. Using the two existing rear roller cover screws and a #2 Phillips screwdriver, attach the rehab rail kit end caps to the frame.



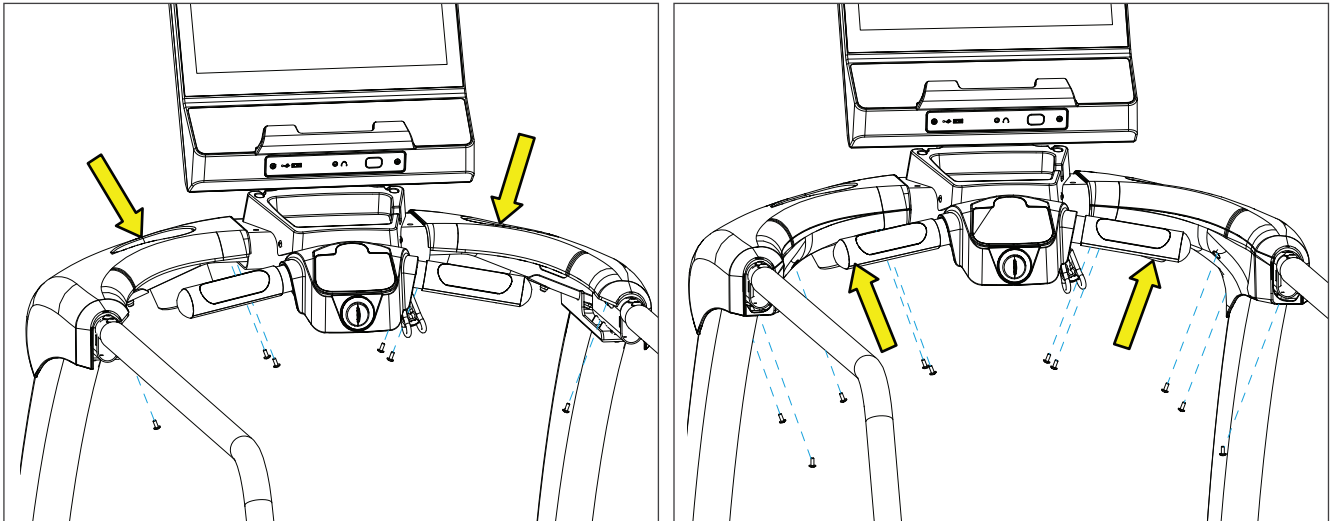
STEPS CONTINUED

5. Attach one side at a time:
 - a. Line up the bottom of the long handgrip assembly with the openings of the end cap and finger tight the hex bolts/spring washers.
 - b. Line up the top of the long handgrip assembly with the rehab kit handrails and finger tight the allen bolts/star washers.
 - c. Once all the hardware is finger tight, use a 13mm wrench to fully tighten the hex bolts and a 5mm allen wrench to fully tighten the allen bolts.

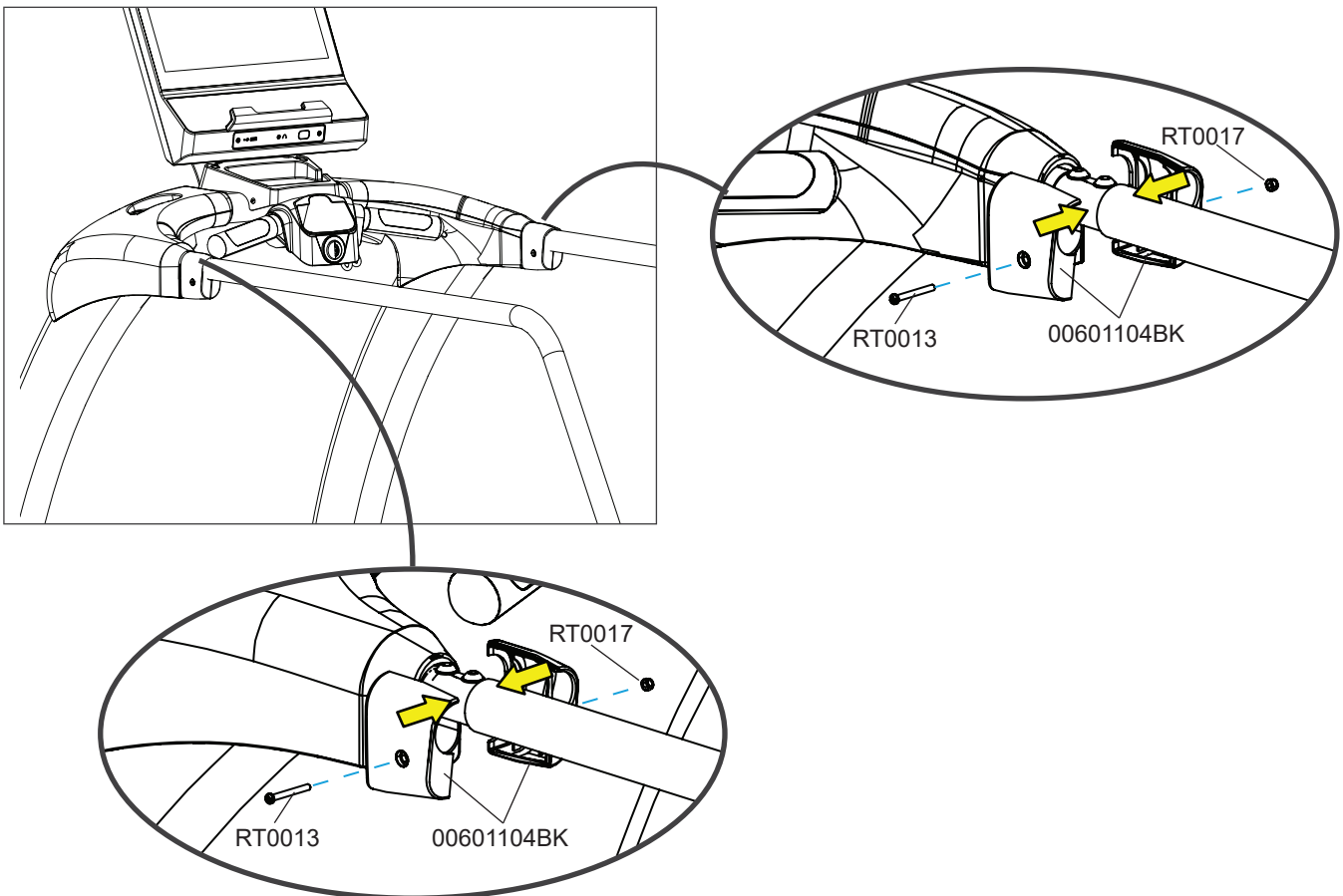


STEPS CONTINUED

6. Using a #2 Phillips screwdriver, reattach the top and bottom shoulder covers to the console rack using the previously removed 16 screws.



7. Using a #2 Phillips screwdriver, attach the left and right rehab rail clamshell assemblies.



QUESTIONS? NEED HELP? PLEASE CONTACT US!

DIRECT CUSTOMERS/CORPORATE ACCOUNTS PRODUCT SUPPORT NORTH AND SOUTH AMERICA

service.direct@truefitness.com | 800.868.8783
8:30am - 5:00pm (CST) Monday - Friday

When contacting TRUE Product Support, please have the following information ready:

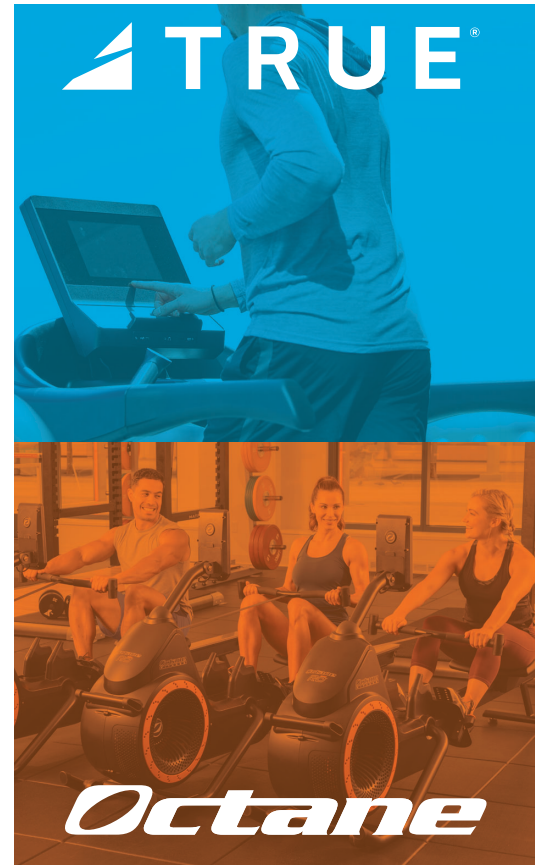
- + Model Number
- + Serial Number
- + Contact Information—Full Name, Email, and Phone Number
- + Address of Facility or Residence
- + Detailed Description of the Problem *(along with pictures or video if applicable)*

Online Support Resource: portal.truefitness.com

The Customer Portal is your online support resource for:

- + Submitting a Troubleshooting Ticket
- + Placing and Tracking Orders
- + Submitting Labor Claims
- + Registering Product Warranty
- + Accessing Product Information (Bulletins, Owner's Manuals, Service Manuals, Exploded Model Views, Parts Lists, Service Videos, and more)

To sign up for the customer portal, send an email to service@truefitness.com and include the following information: Account Director First and Last Name, Email Address, Phone Number, and TRUE/Octane Account Number



RETAIL CUSTOMERS/DISTRIBUTORS PRODUCT SUPPORT NORTH AND SOUTH AMERICA

service@truefitness.com | 800.883.8783
customerservice@octanefitness.com | 800.726.9662
8:30am - 6:00pm (CST) Monday - Thursday
8:30am - 5:00pm (CST) Friday

When contacting TRUE Product Support, please have the following information ready:

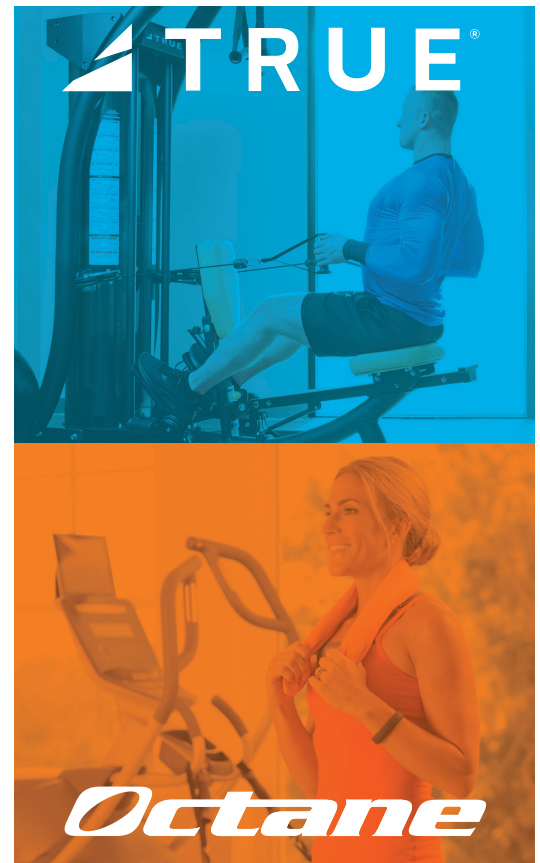
- + Model Number
- + Serial Number
- + Contact Information—Full Name, Email, and Phone Number
- + Address of Facility or Residence
- + Detailed Description of the Problem *(along with pictures or video if applicable)*

Online Support Resource: portal.truefitness.com

The Customer Portal is your online support resource for:

- + Submitting a Troubleshooting Ticket
- + Placing and Tracking Orders
- + Submitting Labor Claims
- + Registering Product Warranty
- + Accessing Product Information (Bulletins, Owner's Manuals, Service Manuals, Exploded Model Views, Parts Lists, Service Videos, and more)

To sign up for the customer portal, send an email to service@truefitness.com and include the following information: Account Director First and Last Name, Email Address, Phone Number, and TRUE/Octane Account Number



T R U E F I T N E S S . C O M



TRUE Fitness Technology, Inc | 865 Hoff Road, St. Louis, MO 63366 | 800.883.8783

© 2023 TRUE. All Rights Reserved.